



68 Church Street

Orrell, Wigan, WN5 8TQ

£800 PCM



Sapphire Homes are delighted to offer For Rent this beautifully presented Traditional Stone Cottage located in the heart of Orrell and ideally located for local amenities, highly acclaimed schools and transport links including Orrell Train Station. The property is deceptively spacious throughout and is immaculately presented. The accommodation briefly comprises of entrance / vestibule leading to a Lounge with through reception 2 / dining room with doors leading into a wonderfully presented modern fitted kitchen with door leading to the rear garden and there is a family bathroom with modern three piece suite in white. To the first floor the landing provides access to three good sized bedrooms. To the front and rear of the cottage are low maintenance paved garden areas, with the rear garden having a private aspect. The property boasts gas central heating, double glazing and a neutral decor throughout and internal viewings are highly recommended to appreciate this wonderful property. No Smokers.





GROUND FLOOR

Entrance / Vestibule

Lounge

Reception 2

Kitchen / Diner

FIRST FLOOR

Landing

Master Bedroom

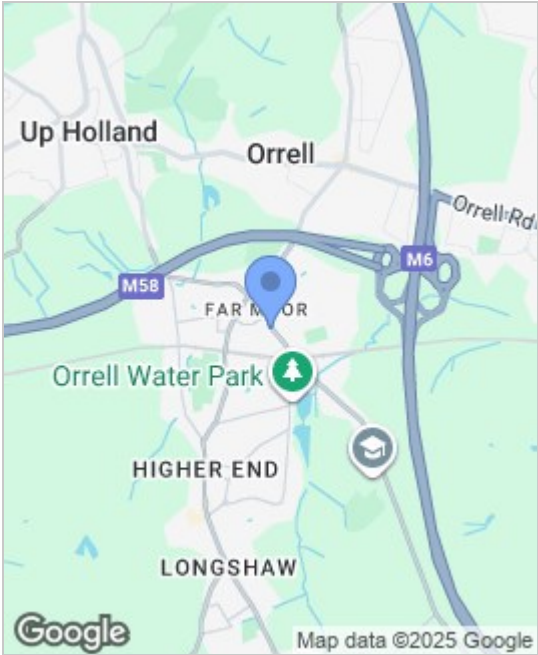
Bedroom 2

Bathroom

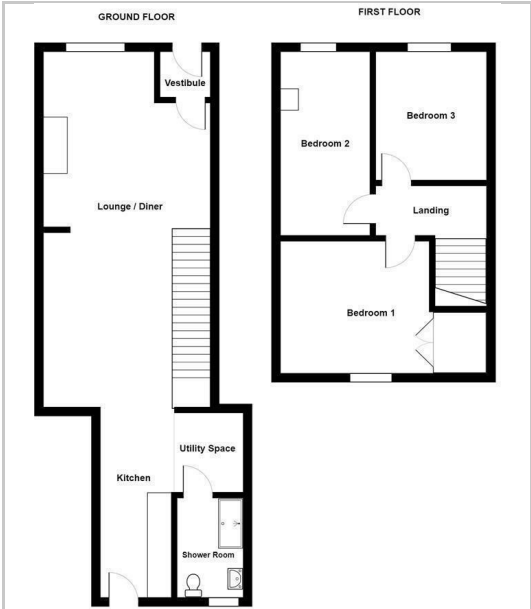
EXTERNAL

Rear Garden

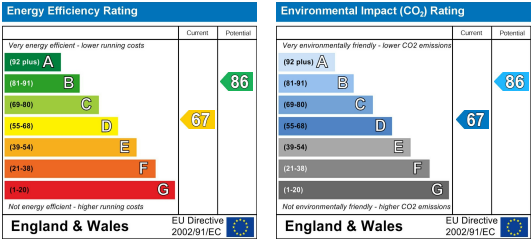
Area Map



Floor Plans



Energy Efficiency Graph



These particulars, whilst believed to be accurate are set out as a general outline only for guidance and do not constitute any part of an offer or contract. Intending purchasers should not rely on them as a representation of fact, but must satisfy themselves by inspection or otherwise as to their accuracy. No person in this firms employment has the authority to make or give any representation or warranty in relation to the property.

